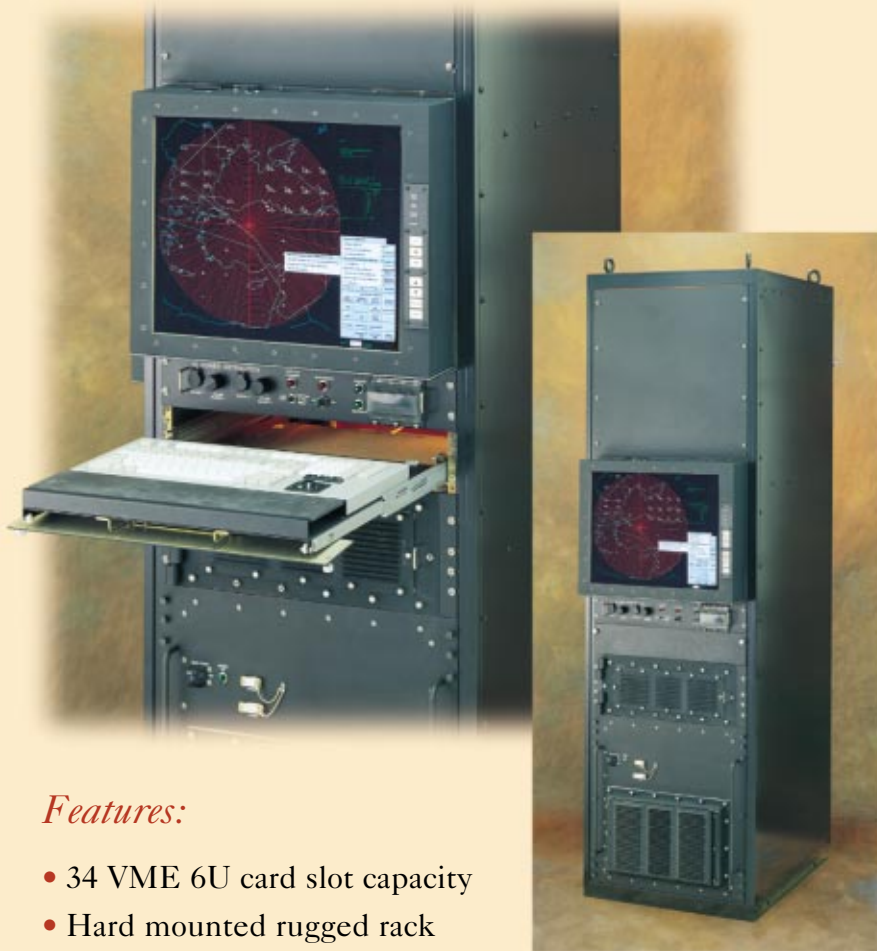


Aydin Model TWS-901

RUGGED RACK-BASED, HIGH SHOCK, COLOR VME WORKSTATION

Offering superior quality and design to fulfill your most demanding requirements.



Features:

- 34 VME 6U card slot capacity
- Hard mounted rugged rack
- MIL-S-901 Grade B shock
- 20" AMLCD color monitor
- Keyboard/trackball unit
- Mass storage chassis
- Primary/secondary input power operation with automatic switchover
- 20 Oersted magnetic field operation



AYDIN DISPLAYS, INC.

Your partner in
display technology.

THE AYDIN MODEL TWS-901

The Aydin Model TWS-901 is a family of reconfigurable compact general purpose rack mounted VME workstations qualified for MIL-STD-901D, Grade B, Class 1 shock. The Model TWS-901 is hard mounted to the deck . Aydin has applied the technological know-how gained from years of experience meeting the most demanding requirements including shock, vibration, EMI/EMC, and nuclear hardening to design and produce a low cost solution for mission critical shipboard applications. Risk minimization is a key concern during any procurement and Aydin offers a fully qualified NDI/COTS fielded system that can be tailored for your processing needs.

VME CARD/MASS STORAGE CHASSIS

The VME card chassis is designed to mount on slides within a standard 19" equipment rack. Within the chassis is a shock and vibration isolated sub-chassis holding a 17-slot VME (6U x 160mm) card cage, five half-height peripheral slots and a 750 Watt power supply. The VME card cage is accessible from the top of the chassis, and the five-slot half-height peripheral bay is accessible via the hinged front door. The I/O panel is removable and is easily punched and marked for specific applications. The VME card chassis features the Hewlett-Packard, HP 744 processor or it will accept any industry standard processor and card set, and it can be provided with any industry standard, half-height peripheral including hard drives from 2 GB through 9 GB mounted in rugged removable canisters. The chassis is available with either an 8U or 11U panel height. Aydin can supply the VME card chassis at any level of functionality from an empty chassis through a completely integrated and tested workstation system. The TWS-901 rack can accommodate one or two VME card chassis.

FLAT PANEL MONITOR

The Aydin Model RFP/20A Rugged Color Active Matrix Liquid Crystal Display (AMLCD) provides superior high resolution color display capabilities and exceptional reliability under adverse conditions. This monitor uses industry standard video inputs and features automatic synchronization from VGA through 1280 x 1024. The monitor is 9U high, has BIT, and all controls are on the front panel.

AUXILIARY PERIPHERAL CHASSIS

An Auxiliary Peripheral Chassis (4U high) is available which provides an additional four standard half-height peripheral slots.

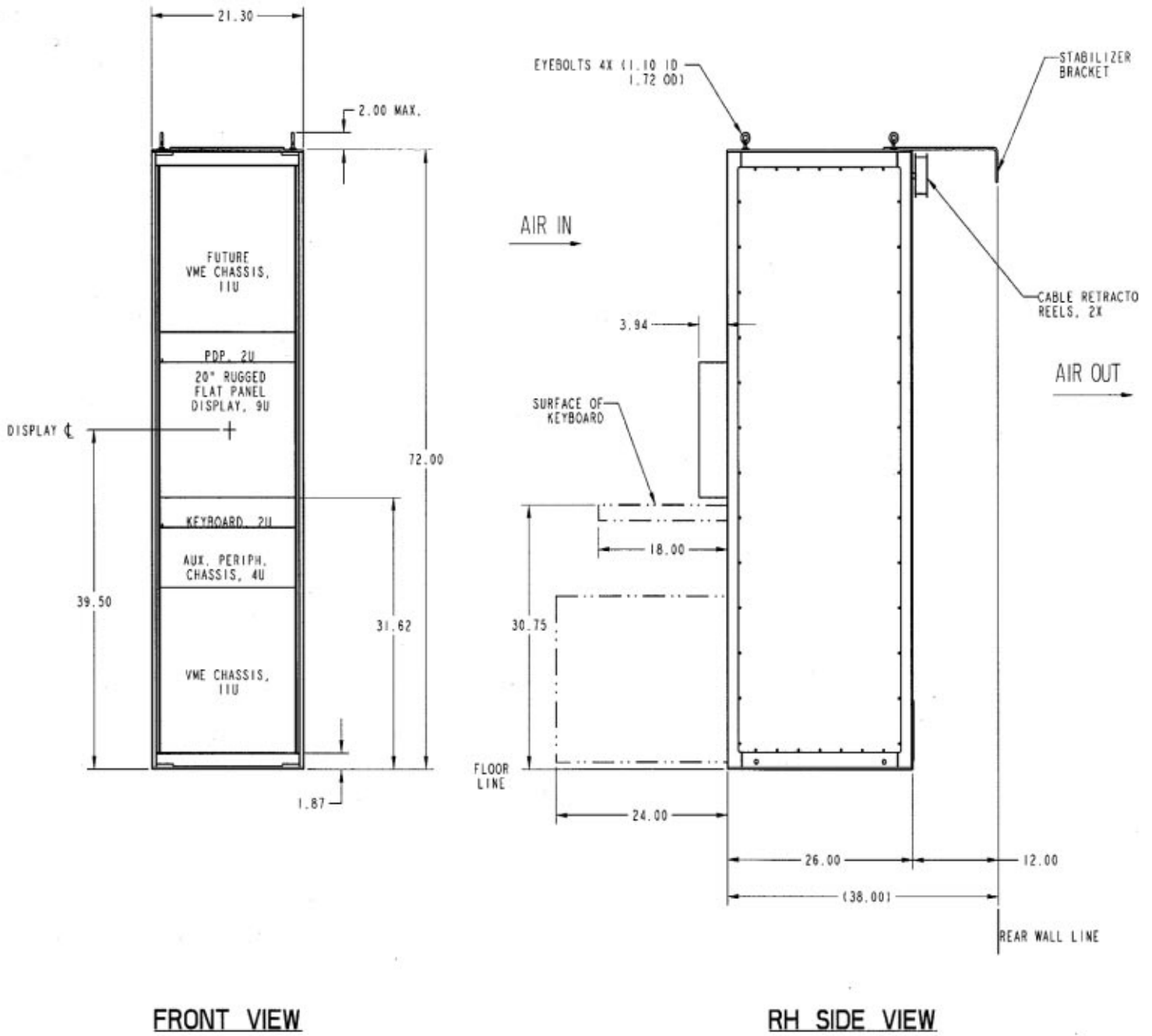
KEYBOARD/TRACKBALL UNIT (KBTU)

The Aydin Rugged Keyboard is a standard QWERTY 121-key keyboard with integral three-button trackball. The keyboard is fully ruggedized and all electronics, switches and connectors are sealed against dust, liquids and general contamination. The keyboard can be supplied as a SUN Type 5 compatible or compatible with the IBM PC AT/PS2. The keyboard is on a slide mounted tray (2U high) that can be stowed when not in use.

POWER DISTRIBUTION UNIT

An optional Power Distribution Unit (2U high) is available that will accept two AC inputs and automatically transfer the rack from primary power to secondary power should primary power fail.

DIMENSIONAL OUTLINES



AYDIN DISPLAYS, INC.

VISUAL PERFORMANCE

Display Viewing Angle:	+/- 80° Up/down/right/left (typical) ± 60° minimum
Viewable Image Size:	20.1" Diagonal (equivalent to 21" CRT)
Active Display Area:	399.36 x 319.49 mm
Display Resolution:	640 x 350 640 x 400 640 x 480 720 x 400 800 x 600 1024 x 768 1280 x 960 1280 x 1024
Display Colors:	Unlimited (full color)
Pixel Pitch:	0.312 x 0.312 mm
Contrast Ratio:	100:1 (typical)
Pixel Arrangement:	RGB Vertical
Brightness:	135 cd/m ² with EMI faceplate (typical)
Backlight Unit:	Ten cold cathode fluorescent lamps with inverter; replaceable
Video Input Impedance:	75 OHM
Display Controls:	Power, Brightness, Horizontal Clock Total Count, Horizontal Clock Delay, Vertical Position, Horizontal Position
Built-In-Test:	<ul style="list-style-type: none">• Lamp Test• Fan Fault Warning• Over Temperature Warning• Sync Loss Indicator• Test Patterns (Crosshatch, White Field, Color Bars)
Rear Connectors:	5 BNC connectors (RGB, V-Sync, H-Sync or composite sync) and power input connector OPTION: TRIAX (Trompeter # BJ76) connectors or VGA connector

SPECIFICATIONS

Electrical and Physical

Line Voltage:	92 to 138 VAC
Line Frequency:	50/60 Hz Single Phase
Weight:	500 - 700 pounds depending upon configuration
Acoustic Noise:	55 dba @ 1m
Safety:	MIL-STD-454, Requirement 1
Finish:	FED-STD-595 Black No. 37038 IAW MIL-C-22750
Compact Design:	Height: 72", Width: 21.3", Depth: 26", Keyboard Height: 30.75", Display Centerline Height: 39.5"

Environmental

Temperature:	0°C to 45°C; MIL-STD-810E Method 501.3, Procedure II (Operational) -20°C to 70°C; MIL-STD-810E Method 501.3, Procedure I (Non-operational)
Humidity:	5% to 95% non-condensing; MIL-STD-810E, Method 507.3, Procedure I
Shock:	MIL-S-901D, Grade B, Class 1
Vibration:	MIL-STD-167-1, Type I
Drip Proof:	MIL-STD-810E, Method 506.3, Procedure II
Sand/Dust:	MIL-STD-810E, Method 510.3
EMI:	MIL-STD-461D
Shipboard DC	
Magnetic Field:	20 oersteds (1600 A/m); DOD-STD-1399, Section 070

 **AYDIN DISPLAYS, INC.**

700 Dresher Road, Horsham, PA 19044 USA — Tel: 215-830-9515 — Fax: 215-830-9545
E-mail: sales@aydindisplays.com — Internet: <http://www.aydindisplays.com>